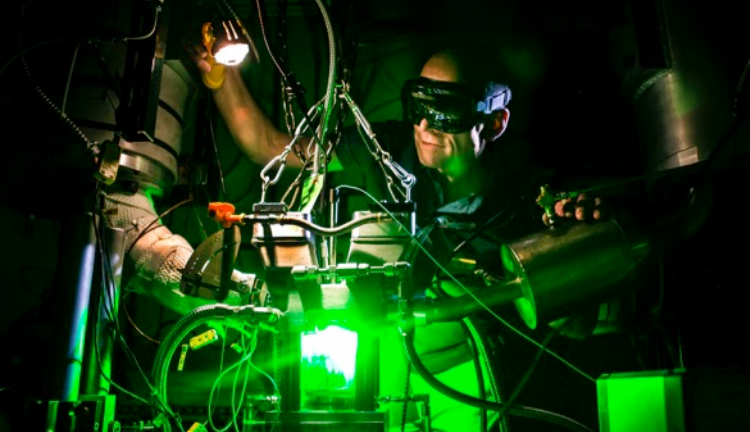
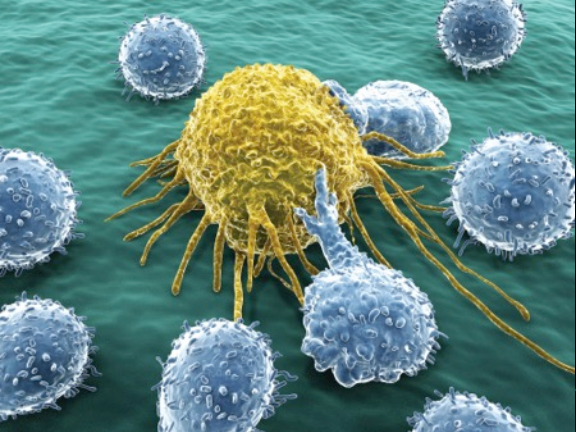




Research at the University of Michigan

S. Jack Hu
Vice President for Research



The University of Michigan Office of Research

advances the excellence and integrity of research, scholarship, and creative activity across all three campuses by fostering new research and providing a range of central services in support of the research enterprise.



FY 2016 Results

NUMBER OF
AWARDS:
+3.60%



EXPENDITURES:
7TH STRAIGHT YEAR
\$1.39B
A 7.2% INCREASE
TO A NEW RECORD

NUMBER OF
SUBMISSIONS:
-3.52%

VALUE OF
AWARDS:
+14.77%

VALUE OF
SUBMISSIONS:
+0.42%

FY 2017 Results (Through December)

NUMBER OF
AWARDS:
+0.94%

VALUE OF
AWARDS:
-1.88%



EXPENDITURES:
\$738M

+7.19%

NUMBER OF
SUBMISSIONS:
+7.47%

VALUE OF
SUBMISSIONS:
+39.79%

Diversifying Sources of Research Funding

INDUSTRY

- Ongoing relationships with 1,200 companies
- Research expenditures up 8.6% to a record \$85.3 million
- Philanthropic contributions up by 43.6% to \$54.4 million

FOUNDATIONS

- \$59 million in awards

Mcity

Public-private interdisciplinary research partnership to lay the foundations for a revolutionary ecosystem of connected and automated vehicles that will dramatically improve safety, sustainability, and accessibility

- 17 Leadership Circle members
- 51 Affiliate Members
- Federal, state, and local government partners
- Mcity test facility formally opened in FY 2016



Data Science Initiative

Develop new ways to improve the techniques for handling “big data” and apply them to challenging problems

- Connected and automated vehicles
- Personalized Medicine
- Online survey research
- Learning analytics

Exercise and Sport Science Initiative (ESSI)

Collaboration of several U-M schools and colleges, Michigan Athletics, and industry partners to optimize the physical performance and health of athletes and exercisers of all ages and abilities

- Sport technology R & D
- Data Science & Analytics
- Optimal Performance



Opportunities

- Develop more large-scale projects that build on innovative partnerships and interdisciplinary strengths
- Seek more funding from foundations
- Pursue philanthropic gifts for research
- Develop more international partnerships
- Strengthen industry outreach
- Expand clinical trials
- Streamline proposal submission process and improve faculty productivity