

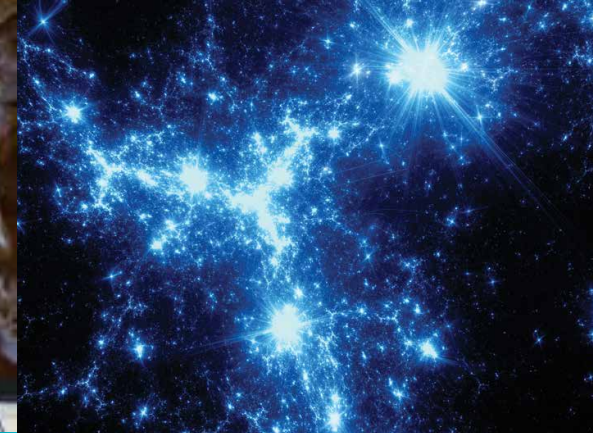
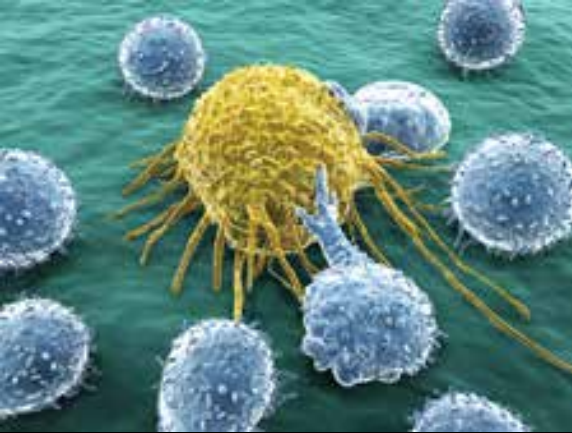


Research at the University of Michigan

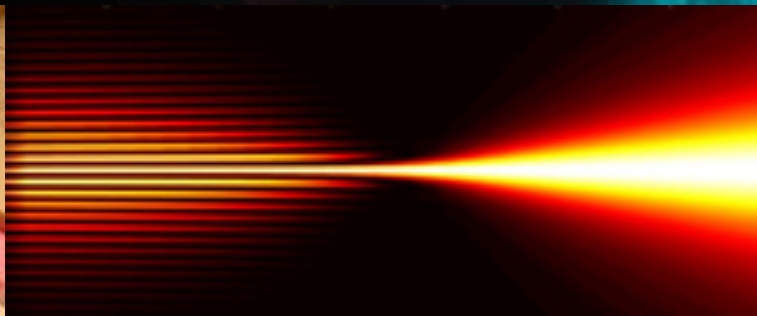
S. Jack Hu

Vice President for Research





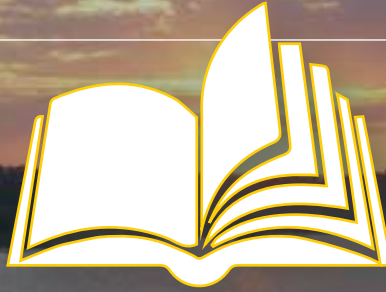
The University of Michigan Office of Research advances the excellence and integrity of research, scholarship, and creative activity across all three campuses by fostering new research and providing a range of central services in support of the research enterprise.



FY 2015 Results

NUMBER OF
AWARDS:

+9.12%



EXPENDITURES:

\$1.3B

7TH STRAIGHT YEAR

OVER \$1.0B

NUMBER OF
SUBMISSIONS:

+9.58%

VALUE OF
AWARDS:

+7.11%

VALUE OF
SUBMISSIONS:

+8.38%

FY 2016 Trends (Through December)

NUMBER OF
AWARDS:
+3.38%



EXPENDITURES:

\$689M

+3.96%

NUMBER OF
SUBMISSIONS:
-5.80%

VALUE OF
AWARDS:
+2.39%

VALUE OF
SUBMISSIONS:
-3.48%

Diversifying Sources of Research Funding

INDUSTRY

- Relationships with 1,200 companies through Business Engagement Center
- Research expenditures up 17.5% to a record \$78 million
- Philanthropic contributions up by 2.7% to \$38 million

FOUNDATIONS

- \$60 million in 2015

Tech Transfer



422

NEW
INVENTION
REPORTS

160 PATENTS
ISSUED
NEW RECORD

164 LICENSE/OPTION
AGREEMENTS
NEW RECORD



\$78M

REVENUE — NEW RECORD



19

NEW BUSINESS
STARTUPS
NEW RECORD

Supporting Faculty Productivity

Advanced Research Computing

- Programs and services supporting computational research and discovery
- Platform for outreach to industry and government
- Home of Data Sciences Initiative

Research Ethics and Compliance

- Expediting the growing number of processes required to comply with regulations

Office of Research and Sponsored Projects

- Implementing continuous improvements in research administration processes
- Improved customer satisfaction from 78% to 92% since FY2013



Interdisciplinary Research Initiatives

Data Science Initiative

- Underlies progress in virtually all fields
- \$100 million investment
- Special focus in transportation, health, learning analytics, and social sciences

Mcity

- World's first facility designed expressly to test the potential of connected, automated, and autonomous vehicles
- 55 industry partners at the Mobility Transformation Center



Mcubed — Feeding the Pipeline

Unique seed-funding program to spark innovative interdisciplinary research

First round in Fall 2012

- 222 new projects
- 700 faculty from all schools and colleges
- Led to \$33 million in new external grants

Second round in Fall 2015

- Funding for 225 projects
- Expanded to include industry
- Expanded to Dearborn campus



Opportunities

- Develop larger scale projects that build on innovative partnerships and interdisciplinary strengths
- Seek more funding from foundations
- Pursue philanthropic gifts for research
- Develop more international partnerships
- Strengthen industry outreach
- Expand clinical trials
- Streamline proposal submission process and improve faculty productivity